



F-LINE

COLLECTION 2025



PRESTIGE®



SAVORING
ART DE VIVRE



—
**ART DE VIVRE
IN REFINEMENT**
—

We are yacht builders, creators of dreams.



INTRODUCTION



We are yacht builders, passionate about yachting. We have perfected and reinvented an industrial savoir-faire honed by decades of experience at sea.

In our yard located in western France, there are over 30 different fields of skilled craftsmen who participate in the design and construction of PRESTIGE yachts. Multiple generations, a rich variety of expertise, the same desire to create beauty, in order to meet exacting quality standards.



Erwin BAMPs, PRESTIGE Vice President



“ Our yachts combine an elegant exterior design with beautiful interior volumes. ”



Camillo and Vittorio GARRONI

Over the years, with PRESTIGE, GARRONI DESIGN has successfully combined Italian design with comfort and innovation. We design exceptional yachts, the reflections of a creative vision that has always driven us: the desire to create something lasting; timeless and always contemporary.

LUXURY OF SPACE

The mastery of fine materials, of air, space, and light, yields exceptional and sophisticated yachts. PRESTIGE transforms the complex into the very simple and offers intelligent layout and high-end technology to reinvent life at sea.



WHISPERED LUXURY

A **refined and harmonious atmosphere** at once awakens the senses and makes you feel at home. Designed with great care and pride, each detail is meticulously crafted from the finest materials, yet without excess, remarkable but never overstated.



TIMELESS ELEGANCE

PRESTIGE yachts are distinguished by **bright and inviting** generous interior volumes and a well-balanced, streamlined aesthetic on the exterior. The natural harmony between living spaces enhances the timeless character of each PRESTIGE yacht.



OUR HERITAGE IN LES HERBIERS

Our two shipyards, in Les Herbiers, France and Monfalcone, Italy, house the entire brand's savoir-faire. Les Herbiers shipyard is among the largest and most productive factory in the marine industry. Originating from the first Jeanneau facilities, it is today the center of PRESTIGE savoir-faire.



CUTTING-EDGE TECHNOLOGY

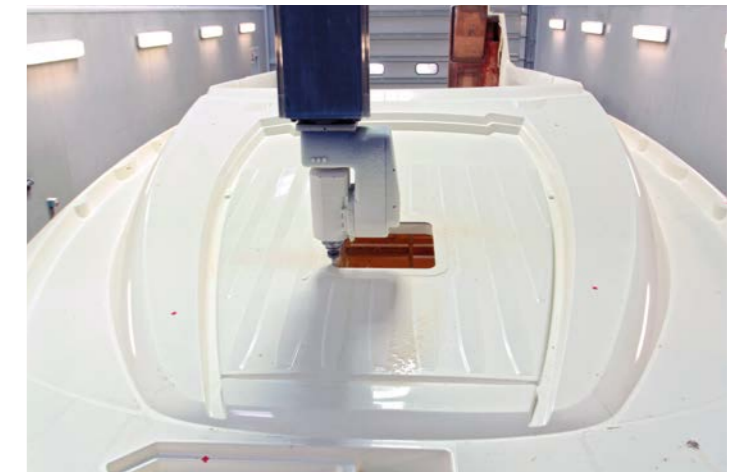
With unique expertise, PRESTIGE designers and engineers continually seek to improve quality and seaworthiness. The latest generations of technology are used to advance the production process and to ensure the highest standards.

Our Les Herbiers factory is certified ISO 9001 for the quality of conception and construction and ISO 14001 certification for environmental protection.



MASTERY OF COMPOSITE TECHNOLOGIES

All fiberglass components are meticulously manufactured using materials and resin applied by vacuum infusion. PRESTIGE creates most large parts by infusion, thus ensuring greater strength and solidity of each piece, while also reducing emissions and improving the working environment.

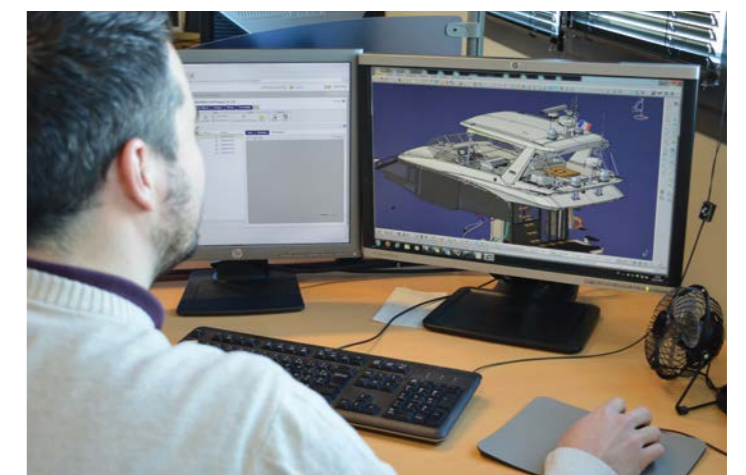


PRIDE IN DETAILS

PRESTIGE yachts are produced with the greatest attention to detail, following a strict production process. From fine woodwork to leather upholstery, PRESTIGE artisans take pride in the details of their craft and demonstrate a common desire to create exceptional yachts.

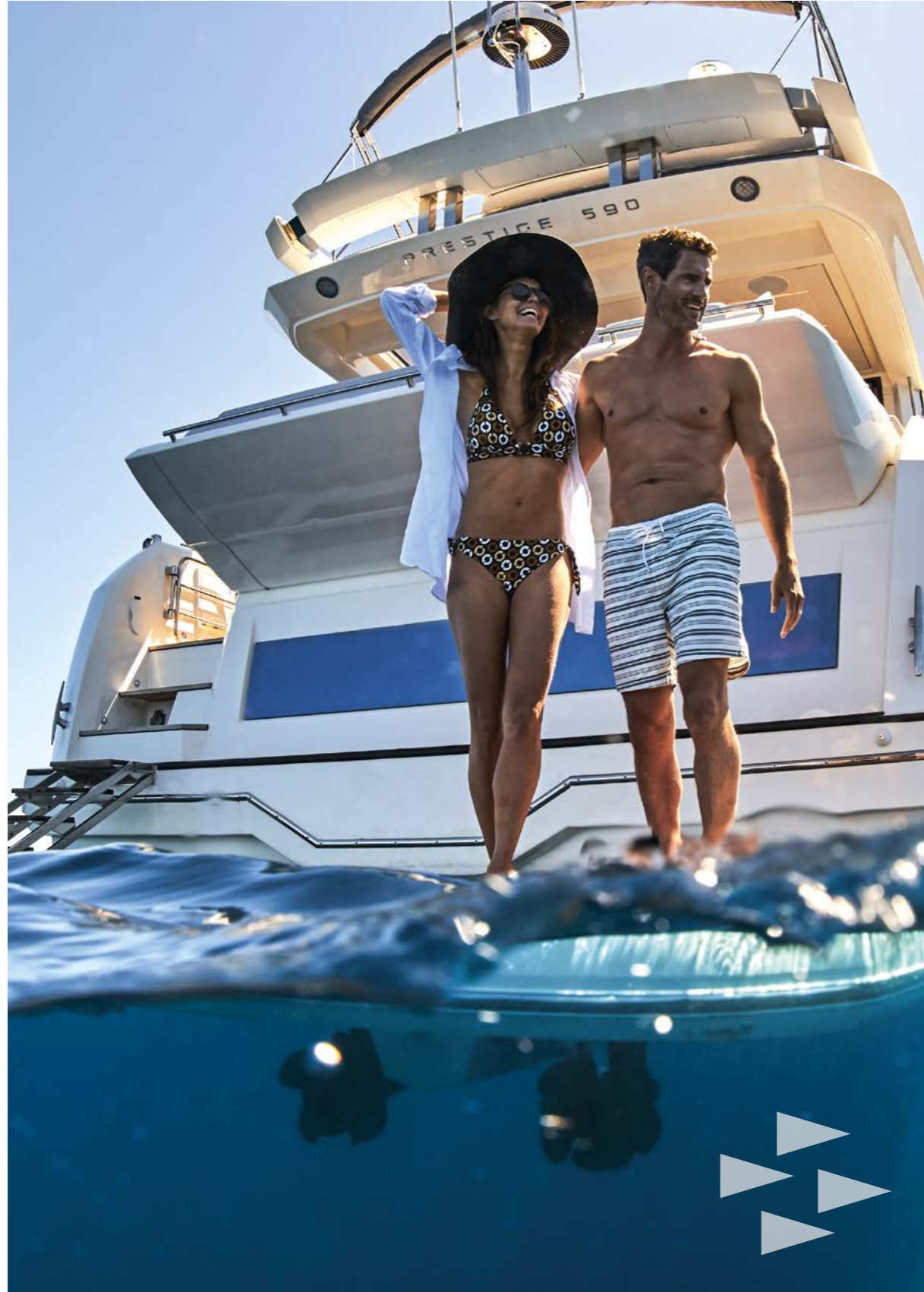
SERENITY

Purposeful innovation guarantees ease of handling, comfortable cruising, stability, and excellent insulation. Moreover, PRESTIGE is one of the first boat builders to design lighter, more spacious and more comfortable yachts by adopting Pod propulsion systems, which have revolutionized life on board.



WARRANTY

Industry-leading 10-year warranty on the structure, and 3-year comprehensive warranty adds value to your PRESTIGE now and in the future.



F-LINE

420
P. 14

460
P. 26

520
P. 38

590
P. 50

690
P. 64

F4.9
P. 60

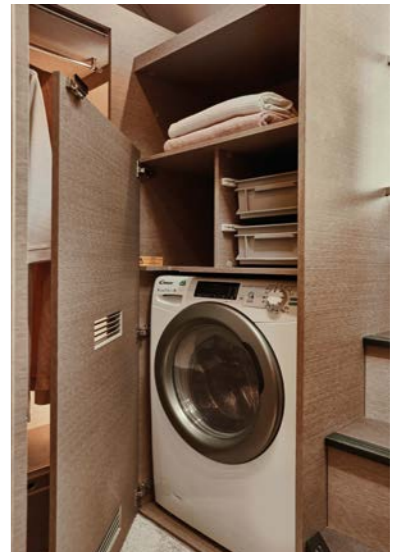
F5.7 **NEW**
P. 66

A unique interior design concept in which fine materials serve to highlight a living space that is rich with space and light.

F-LINE
420







TECHNICAL DATA

DONNÉES TECHNIQUES

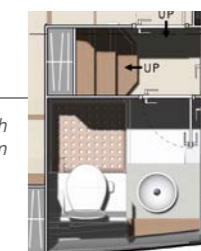
F-LINE
420



Overall length / Longueur hors tout	42'10"	13,06 m
Overall beam / Bau maxi	13'5"	4,1 m
Draft / Tirant d'eau	3'7"	1,10 m
Light displacement / Déplacement léger	22 928 Lbs	10 400 kg
Fuel capacity / Capacité carburant	309 US gal	1 170 l
Water capacity / Capacité eau	87 US gal + 25 US gal (option)	330L + 95L (option)
Hot water heater capacity / Capacité ballon d'eau chaude	11 US gal	40 l
Accommodation / Couchages	4	
Category / Catégorie	B - 10 / C - 12	
Engine / Motorisation	CUMMINS 2 x QSB 6.7 - 380 HP / CV - V-Drive CUMMINS 2 x QSB 6.7 - 425 HP / CV - V-Drive	

Connected boat technology. Equipped with **sea@apps**
CONNECT YOUR BOAT FREE YOUR MIND

Model available with
walk-in-closet or bathroom



F-LINE
460



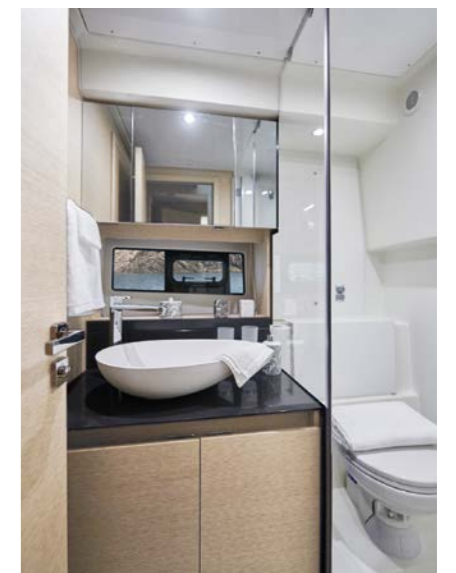




► 2 stateroom version



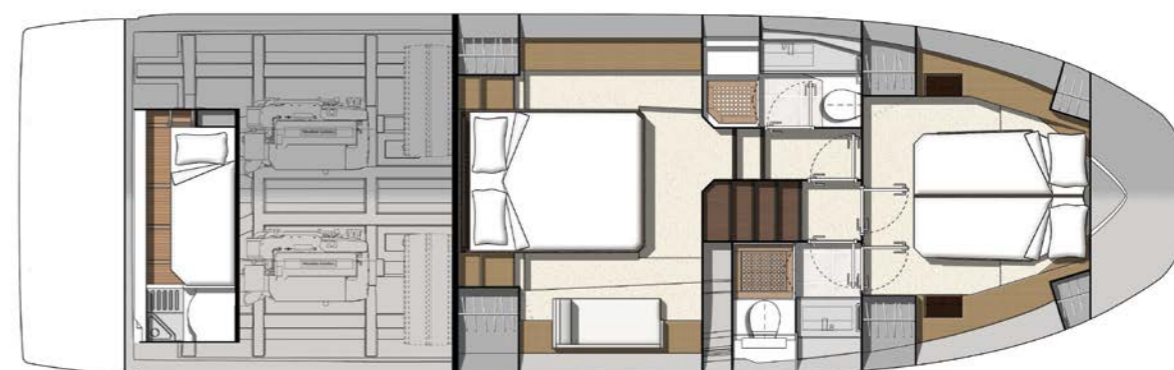
► 3 stateroom version



TECHNICAL DATA

DONNÉES TECHNIQUES

F-LINE
460



Model available with 2 or 3 staterooms

Overall length / Longueur hors tout	46'10"	14,29 m
Overall beam / Bau maxi	14'1"	4,30 m
Draft / Tirant d'eau	3'5"	1,05 m
Light displacement / Déplacement léger	27 780 Lbs	12 601 kg
Fuel capacity / Capacité carburant	328 US gal	1 240 l
Water capacity / Capacité eau	155 US gal	586 l
Hot water heater capacity / Capacité ballon d'eau chaude	11 US gal	40 l
Accommodation / Couchages	6 + 1	
Category / Catégorie	B - 10 / C - 12	
Engine / Motorisation	Volvo 2 x IPS 500 - D6 - 380 HP / CV Volvo 2 x IPS 600 - D6 - 440 HP / CV	

Connected boat technology. Equipped with **sea@apps**
CONNECT YOUR BOAT FREE YOUR MIND

F-LINE
520



F-LINE
520





TECHNICAL DATA

DONNÉES TECHNIQUES

F-LINE
520



Overall length / Longueur hors tout	52'10"	16,11 m
Overall beam / Bau maxi	14'8"	4,49 m
Draft / Tirant d'eau	3'5"	1,05 m
Light displacement / Déplacement léger	34 346 Lbs	15 579 kg
Fuel capacity / Capacité carburant	343 US gal	1 300 l
Water capacity / Capacité eau	168 US gal	636 l
Hot water heater capacity / Capacité ballon d'eau chaude	16 US gal	60 l
Accommodation / Couchages	6 + 1	
Category / Catégorie	B-12 / C-14	
Engine / Motorisation	Volvo 2 x IPS 600 - D6 - 440 HP / CV Volvo 2 x IPS 650 - D6 - 480 HP / CV	

Connected boat technology. Equipped with **sea@apps**
CONNECT YOUR BOAT FREE YOUR MIND

F-LINE
590







F-LINE
590



TECHNICAL DATA

DONNÉES TECHNIQUES

F-LINE
590



Overall length / Longueur hors tout	61'4"	18,7 m
Overall beam / Bau maxi	15'11"	4,84 m
Draft / Tirant d'eau	4'5"	1,35 m
Light displacement / Déplacement léger	42 968 Lbs	19 490 kg
Fuel capacity / Capacité carburant	581 US gal	2 200 l
Water capacity / Capacité eau	201 US gal	760 l
Hot water heater capacity / Capacité ballon d'eau chaude	16 US gal	60 l
Accommodation / Couchages	6 + 1	
Category / Catégorie	B-12 / C-14	
Engine / Motorisation	Cummins 2 x QSC 8.3 - 600 HP / CV - V-Drive Cummins 2 X QSC 8.3 - 600 HP / CV - ZEUS	

Connected boat technology. Equipped with **sea@apps**
CONNECT YOUR BOAT FREE YOUR MIND

Model available
with walk-in closet
or bathroom



F-LINE
690









F-LINE
690



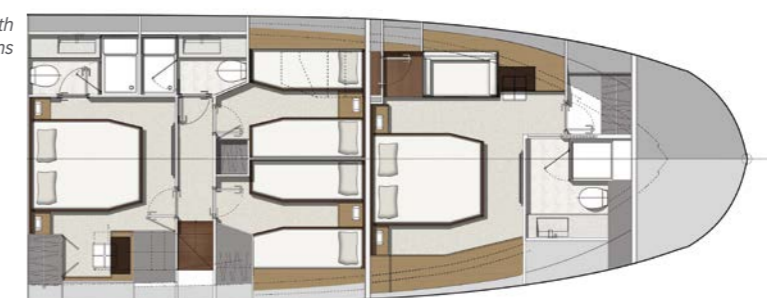
TECHNICAL DATA

DONNÉES TECHNIQUES

F-LINE
690



Model available with
3 or 4 staterooms



Overall length / Longueur hors tout	70'4"	21,45 m
Overall beam / Bau maxi	17'4"	5,30 m
Draft / Tirant d'eau	4'76"	1,45 m
Light displacement / Déplacement léger	76 354 Lbs	34 634 kg
Fuel capacity / Capacité carburant	911 US gal	3 450 l
Water capacity / Capacité eau	201 US gal	760 l
Hot water heater capacity / Capacité ballon d'eau chaude	32 US gal	120 l
Accommodation / Couchages	8 + 2	
Category / Catégorie	B - 14 / C - 18	
Engine / Motorisation	Volvo 2 x IPS 1200 - D13 - 900 HP / CV Volvo 2 x IPS 1350 - D13 - 1000 HP / CV	

Connected boat technology. Equipped with **sear@apps**
CONNECT YOUR BOAT FREE YOUR MIND



NEW F-LINE GENERATION

F4.9 **F5.7** NEW

This new generation is built on the heritage of the PRESTIGE F-LINE, features exciting improvements, such as innovative interior and exterior designs, high-end fittings, and an unrivaled level of fit and finish.

F LINE
F4.9

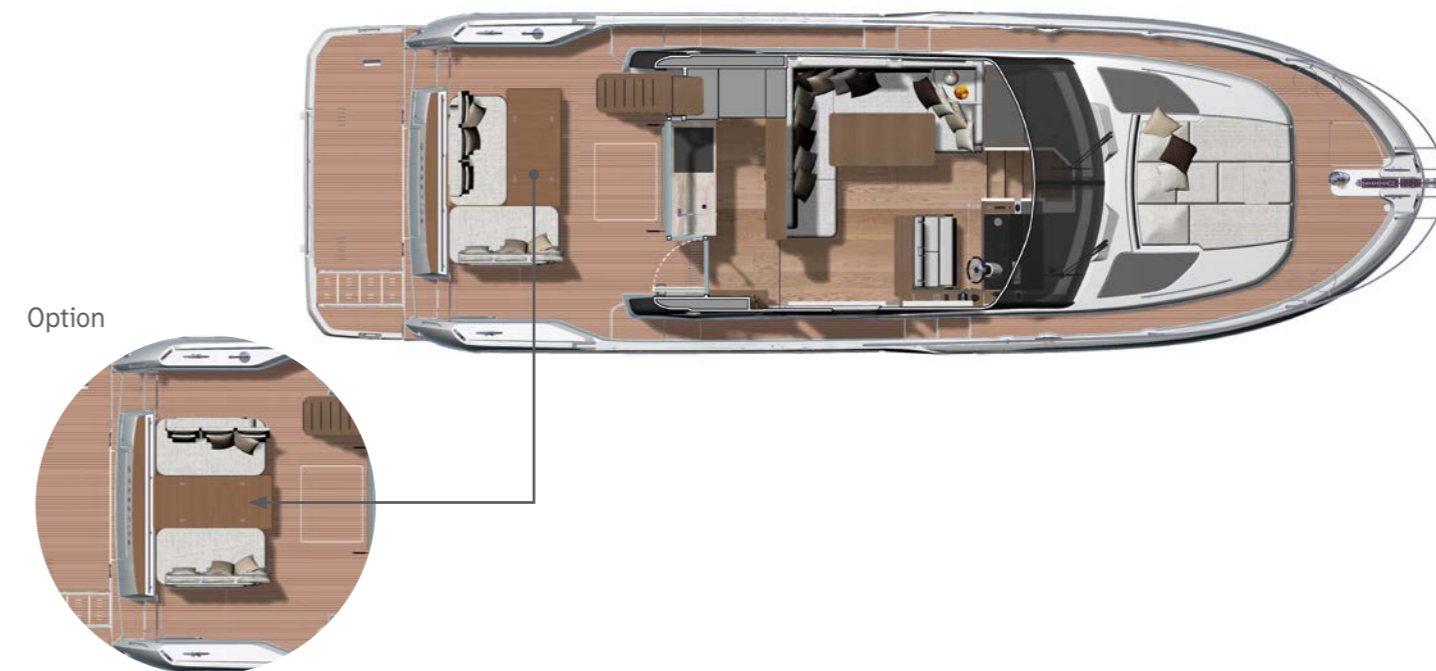
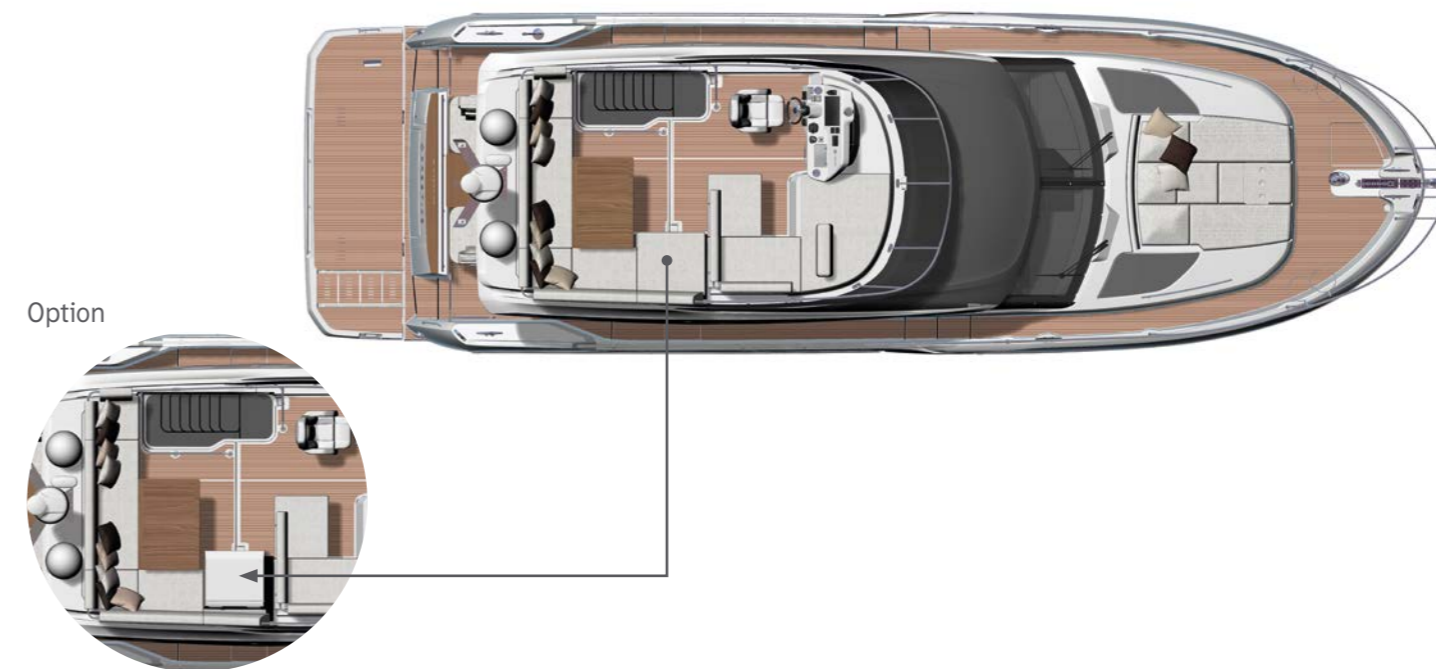




TECHNICAL DATA

DONNÉES TECHNIQUES

F-LINE
F4.9



Overall length / Longueur hors tout	49'10"	15,18 m
Overall beam / Bau maxi	14'8"	4,49 m
Draft / Tirant d'eau	3'1"	1,17 m
Light displacement / Déplacement léger	33 290 Lbs	15 100 kg
Fuel capacity / Capacité carburant	343 US gal	1 300 l
Water capacity / Capacité eau	155 US gal	586 l
Hot water heater capacity / Capacité ballon d'eau chaude	16 US gal	60 l
Accommodation / Couchages	6 + 1	
Category / Catégorie	CE.B	
Engine / Motorisation	Volvo 2 x IPS 650 - D6 - 480 HP / CV	

Connected boat technology. Equipped with **sear@apps**
CONNECT YOUR BOAT FREE YOUR MIND

F-LINE
NEW | F5.7





TECHNICAL DATA

DONNÉES TECHNIQUES

NEW | F-LINE
F5.7



Overall length / Longueur hors tout	56'8"	17,29 m
Hull length / Longueur coque	50'	15,25 m
Overall beam / Bau maxi	15'4"	4,69 m
Draft / Tirant d'eau	4'4"	1,32 m
Light displacement / Déplacement léger	45 012 Lbs	20 417 kg
Fuel capacity / Capacité carburant	582 US gal	2 200 l
Water capacity / Capacité eau	153 US gal	580 l
Hot water heater capacity / Capacité ballon d'eau chaude	16 US gal	60 l
Accommodation / Couchages	6 + 1 crew (option)	
Category / Catégorie	CE - B	
Engine / Motorisation	Volvo 2 x IPS 800 - D8 - 600 HP / CV	

Connected boat technology. Equipped with **sear@apps**
CONNECT YOUR BOAT FREE YOUR MIND

*Hardtop configuration.
Performances depend on the configuration of the yacht and water conditions.

TECHNICAL DATA ACCORDING TO ISO 9001 (QUALITY PRODUCTION) AND ISO 14001 (ENVIRONNEMENTAL MANAGEMENT SYSTEM).
EVERY EFFORT AS BEEN MADE TO ENSURE THAT FACTS, PHOTOS AND FIGURES ARE CORRECT AT THE TIME OF PUBLICATION.
PRESTIGE RESERVES THE RIGHT TO MAKE CHANGES WITHOUT PRIOR NOTICE. BOATS SHOWN IN THIS BROCHURE MAY BE FITTED WITH OPTIONAL EQUIPMENT.
LES MODÈLES PHOTOGRAPHIÉS NE SONT PAS CONTRACTUELS ET PEUVENT ÊTRE PRÉSENTÉS AVEC DES OPTIONS.
LES DÉCORATIONS INTÉRIEURES ET EXTÉRIEURES AINSI QUE LES ÉQUIPEMENTS DIVERS PEUVENT ÊTRE MODIFIÉS SANS PRÉAVIS.
PHOTOGRAPHS OF THESE PRESENTED MODELS ARE NOT CONTRACTUALLY BINDING, AND MAY INCLUDE OPTIONAL EQUIPMENT.
INTERIOR AND EXTERIOR DECORATION AS WELL AS EQUIPMENT MAY BE MODIFIED WITHOUT PRIOR NOTICE.



www.prestige-yachts.com

SPBI - S.A. au capital de 51.541.628 €

Siège social : Parc d'activités de l'Éraudière - 34 rue Eric Tabarly - 85170 Dompierre-sur-Yon

RCS 491 372 702 - La Roche-sur-Yon



Agissez pour
le recyclage des
papiers avec
Jeanneau
et Ecofolio.